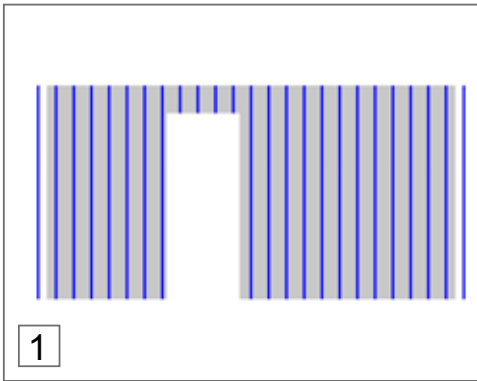
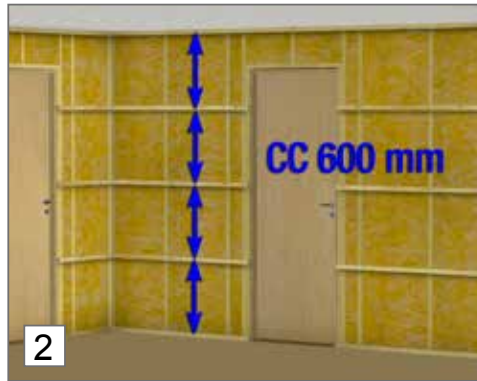


PRE-PAINTED PANEL BOARD



1

1. Distribute the wall breadth so that the first and last panel board are of equal width.



2

2. If the boards are to be installed longitudinally, the wall must be battened with horizontal battens of max. cc 60 cm.

LONGITUDINAL BOARD ON WALLS



3

3/4. Install blocking in internal and external corners.



4

3/4. Install blocking in internal and external corners.



5

5. Cut first panel board and install 10 mm from floor and ceiling.



6

6. Use a spirit level to ensure that the installation starts off right.



7

7. First board on a new wall should be glued with Casco superfix or PL 400.



8

8. The boards must be double-nailed/screwed to each batten.



9

9. Use touch up paint to conceal any nailing.



10

10. Huntonit's corner mouldings can be used for external and internal corners.



11

11. Your new Huntonit walls are finished!

See further information and installation video on our website www.huntonit.no.