

**BEHA SMARTHEATERS GEN 2
PV, LV, PGV, LGV, HR, LR**

INSTALLATION AND USER GUIDE



Contact information: Email: info@scandinaviantrading.co.uk Tel: 01932 645050
Unit 2 Glen Court, Canada Road, Byfleet, KT14 7JL

Glass: PGV, LGV, HR, LR - Gen 2



Steel: PV, LV - Gen 2



LANGUAGES:

NO	3	NL	39
DK	9	TR	45
SE	15	HR	51
FI	21	SI	57
UK	27	HU	63
DE	33		

Installation and user guide

1.0 Technical information	27
2.0 Safety information	28
2.1 When used as a freestanding heater	29
3.0 Installation	29
4.0 Using the heater	30
5.0 Care and maintenance	30
6.0 Additional accessories	30
7.0 Energy efficiency	31
8.0 Waste management	32

Please read the manual carefully before use of the heater and save it for later reference. This user guide is also available at beha.no.

1.0 Technical information

The heater can be operated manually without using the app. The ON/OFF switch and thermostat wheel are located in the lower right corner of the heater, under the safety lid.

Factory set temperature is 22 °C. The thermostat can be set at min. 5 °C (Frost guard).

When the thermostat is operating (power on) a small red dot will show on the floor.

Beha heaters PV and LV are IP24 tested and approved for installation in bathrooms and utility rooms. They can be installed according to current regulations.

1.1 By power outage

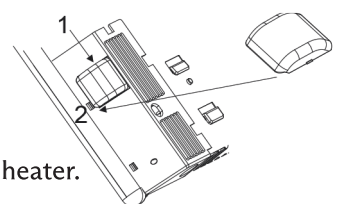
Without app: The heater returns to last set temperature.

1.2 Open window detection

When opening a window and the temperature drops more than 5°C within 40 sec, the open window detection is activated. The heater changes between chosen temperature for 10 seconds, and 5 degrees for 30 seconds. The function is active for max. 15 minutes. The heater returns to the last set program / temperature.

1.3 Protection and safety lid

1. Take off the lid by pulling it lightly down.
2. To put the lid back on the mark shall point towards the front of the heater.



2.0 Safety information

When using any electrical appliance, basic precautions should always be followed to reduce the risk of fire and injuries.

Please read the entire user manual before using heater.

1. Before use, remove all packaging.
2. Turn the switch to OFF. Remove the plug from the wall socket when the heater is not in use and when cleaning.

CAUTION! Parts of this product will become hot and may cause burns. Pay especially attention where children and vulnerable people are present.

Children aged from 3 years and less than 8 years shall only switch on/off the appliance provided that it has been placed or installed in its intended normal operating position and they have been given supervision or instruction concerning use of the appliance in a safe way and understand the hazards involved. Children aged from 3 years and less than 8 years shall not plug in, regulate, and clean the appliance or perform user maintenance.



Warning:
In order to avoid overheating,
do not cover the heater.

This appliance can be used by children aged from 8 years and above and persons with reduced physical, sensory, or mental capabilities or lack of experience and knowledge if they have been given supervision or instruction concerning use of the appliance in a safe way and understand the hazards involved. Children shall not play with the appliance. Cleaning and user maintenance shall not be made by children without supervision.

Children of less than 3 years should be kept away unless continuously supervised.

Furthermore, do not use the heater in areas where gasoline, paint, or flammable liquids are

used or stored.

Warning: Do not use this heater in small rooms when they are occupied by persons not capable of leaving the room on their own, unless constant supervision is provided.

The wall socket in which the heater is connected should be visible and accessible.

The heater must not be located immediately below a wall socket. Do not operate any heater with a damaged cord or plug. The cable must not come into contact with hot surfaces of the heater during operation.

Do not cover the cord with carpets. Do not step on the cable. Ensure that no foreign objects are placed in the heater's air outlets as it can cause electrical failure or fire.

When cleaning or relocating or when the heater is not in use, the heater should be switched off and the cord unplugged. In that order. Do not remove the plug from the socket by pulling the cord. Remove the cord from the socket by gripping the plug and gently pull it out of the wall socket.

Do not touch the heater with wet hands. The heater must be in an upright position.

The heater should not be repaired, dismantled or modified by unauthorized personnel.

Do not use this heater in the immediate surroundings of a bath, a shower, or a swimming pool.

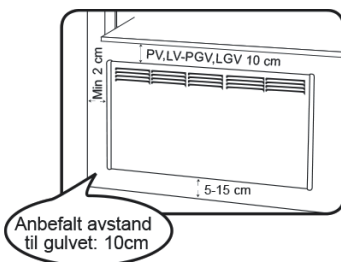
Do not use this heater if it has been dropped or if there are visible signs of damage to the heater.

Warning: The heater should be located away from furniture, curtains or other flammable objects.

2.1 When used as a freestanding heater

When using your Beha heater as a free-standing floor heater (with PF 240), please note that the protection class changes to IP20. The heater can thus not be used in bathrooms or other damp areas where protection class IP24 is required. The heater must be placed on a level floor, and it should not be used on soft surfaces as it may tip over. The heater must not be placed near combustible materials. Switch off the heater when you are not present, especially if there are children or animals in the room.

3.0 Installation

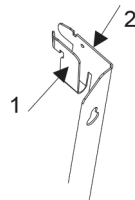


3.1 Electrical connection and use

Before connecting, please ensure that the voltage is 220-240V ~ 50Hz. The heater should be connected to a socket in the room it is intended to be used. Do not connect the heater to sockets in adjacent rooms using an extension cable.

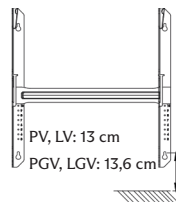
3.2 Removing wall bracket

Remove wall bracket from heater by pressing lip 1 and push lightly down-wards on lip 2. Pull the bracket out gently.



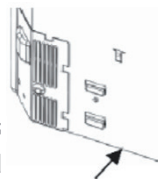
3.3 Fixing the wall bracket

Insert a screw in the lower keyhole approx. 13 cm above the floor. Level the bracket and insert the other 3 screws. When the heater is installed, the distance below should be approx. 10 cm.



3.4 Mounting the heater on the wall bracket

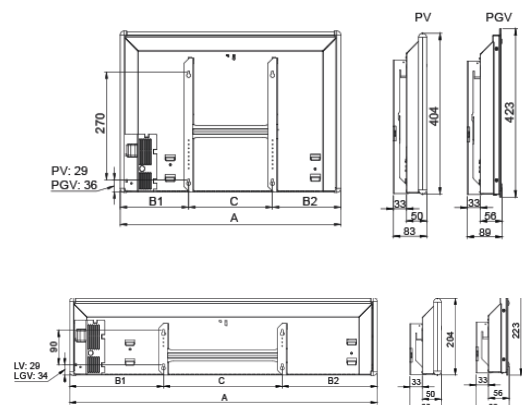
On the bottom of the back plate there are two small triangular tracks. Place the heater onto the tracks and push the heater towards the lips on top of the bracket in an upright position.



3.5 Heater sizes

Type	Watt	A mm	B1/B2 mm	C mm
PV	400	431	147/73	210
	600	555	172	210
	800	679	184	310
	1000	803	246	310
	1250	927	158	610
	1500	1175	282	610
	2000	1423	406	610
LV	500	803	246	310
	750	1051	220	610
	1000	1299	344	610
	1250	1671	380	910

Type	Watt	A mm	B1/B2 mm	C mm
PGV	400	440	152 / 78	210
	600	564	177	210
	800	688	189	310
	1000	812	251	310
	1250	936	163	610
LGV	750	1060	225	610
	1000	1308	349	610



4.0 Using the heater

The heater may also be used without mobile app control.

Switch on the heater. The heater is factory set at 22°C. Scrolling the thermostat wheel changes the temperature setting. When the selected temperature is shown for the first time it will be displayed on the floor for 10 minutes. When adjusting the temperature later it will be displayed for 10 seconds.

After a power outage or the power is switched OFF and then ON again, the Bluetooth® symbol will be

displayed on the floor together with the temperature for 10 minutes. After a power outage the heater will restart at the last set temperature.

4.1 Using the heater with mobile app control

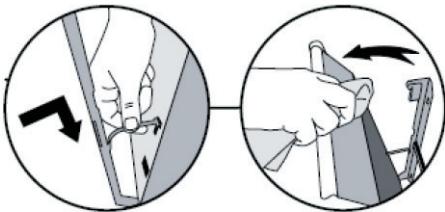
The Beha smartheater app is working from iOS 13 and Android 8.

For more information regarding use of the app, visit beha.no

5.0 Care and maintenance

5.1 Easy cleaning

The heater tilts forward on the fixing bracket for the ease of cleaning behind it.



1. Remove power connection and make sure the heater is cooled down before cleaning.
2. Clean the outside with a damp cloth.
3. Never use abrasive cleaners or submerge the heater in water or other liquids.

6.0 Additional accessories

6.1 Beha PF 240 (feet)

Suitable for PV, LV, PB and LB heaters. Please note that when the heater is installed with PF 240, it becomes freestanding and changes to IP 20. This is according to current regulations. When using PF 240, the same safety precautions as described in this manual apply. How to install PF 240 is described in the manual that follows the accessory.



6.2 Beha GB 200 (steel bracket)

Suitable for LV, LB and LGV heaters. Steel bracket can be used for mounting the heater on the floor instead of the wall, close to the wall.



6.3 Beha KB 200

Junction Box for fixed electrical installation. Mounted on the wall bracket.



7.0 Energy efficiency

This product complies with the EU regulations of the Ecodesign Directive (2009/125/EC) for energy-related products.

Model identifier	P nom kW	P min kW	P max,c kW	Auxiliary electricity consumption	eloff kW	elism kW	elidle kW	elnsb kW
P(G)V 4 GEN 2	0,4	0,4	0,4	P(G)V 4 GEN 2	0	N/A	0,0006	0,0006
P(G)V 6 GEN 2	0,6	0,6	0,6	P(G)V 6 GEN 2	0	N/A	0,0006	0,0006
P(G)V 8 GEN 2	0,8	0,8	0,8	P(G)V 8 GEN 2	0	N/A	0,0006	0,0006
P(G)V 10 GEN 2	1	1	1	P(G)V 10 GEN 2	0	N/A	0,0006	0,0006
P(G)V 12 GEN 2	1,25	1,25	1,25	P(G)V 12 GEN 2	0	N/A	0,0006	0,0006
PV 15 GEN 2	1,5	1,5	1,5	PV 15 GEN 2	0	N/A	0,0006	0,0006
PV 20 GEN 2	2	2	2	PV 20 GEN 2	0	N/A	0,0006	0,0006
LV 5 GEN 2	0,5	0,5	0,5	LV 5 GEN 2	0	N/A	0,0006	0,0006
L(G)V 7 GEN 2	0,75	0,75	0,75	L(G)V 7 GEN 2	0	N/A	0,0006	0,0006
L(G)V 10 GEN 2	1	1	1	L(G)V 10 GEN 2	0	N/A	0,0006	0,0006
LV 12 GEN 2	1,25	1,25	1,25	LV 12 GEN 2	0	N/A	0,0006	0,0006
Pnom kW: Nominal heat output Pmin kW: Minimum heat output (indicative) Pmax,c kW: Maximum continuous heat output				eloff: In off mode elism: In standby mode elidle: In idle mode elnsb: In network standby				

HR=PGV LR=LGV

7.1 Technical parameter

F2 and F3 are correction factors that represent a positive contribution to the seasonal energy efficiency for space heating. Seasonal space heating energy efficiency for electric wall-mounted heaters, with a nominal heating output above 250W, shall not be less than 38%.


Type of heat output/room temperature control (select one) Correction factor F2		
Single stage heat output and no room temperature control		
Two or more manual stages, no room temperature control		
With mechanic thermostat room temperature control		
With electronic room temperature control		
Electronic room temperature control plus day timer		
Electronic room temperature control plus week timer	yes	7

Other control options (multiple selections possible) Correction factor F3		
Room temperature control, with presence detection		
Room temperature control, with open window detection	yes	1
With distance control option	yes	1
With adaptive start control		
With working time limitation		
With black bulb sensor		

Energy efficiency for Beha P(X)V and L(X)V Gen 2 heaters: 39%

8.0 Waste management

Directive 2012/19/EU regarding the handling of electrical and electronic waste (Waste Electrical and Electronic Equipment-WEEE). Make sure that this product is disposed in the correct manner, so that it does not constitute a health or environmental risk.

The symbol  on the product or on the documents accompanying the product, indicates that this product may not be treated as household waste. Hand it over to an authorized reception for recycling of electrical and electronic equipment. Disposal must take place in accordance with the local waste disposal regulations.

For further information, treatment, recovery, and recycling of this product, contact your local council, waste disposal service or the shop where you purchased it.

8.1 Recycling of packaging

Component	Material	Recycling
Packaging	PAP 20	Carboard and paper
Screw bag	PE	Plastic

